

BLOWERS, IMPELLERS, CROSSFLOW FANS
AND VALUE ADDED MANUFACTURING



COFAN USA



COFAN-USA
48664 Milmont Drive
Fremont, CA 94538 USA

+1 (510) 490 7533
info@cofan-usa.com
www.cofan-usa.com

- >25 years of cooling systems experience
- US inventory of standard cooling products
- US design, fabrication and assembly
- China, Taiwan and S. Korea manufacturing
- ISO 9001:2015 /1 4001:2015 Qualified

THE COMPANY

Established in 1994, COFAN USA provides advanced, customized solutions to serve our partners' unique needs and allow them to succeed in their markets. While we started out as a company dedicated to cooling solutions for electronic and industrial applications, over time we have expanded to provide innovative solutions in the PCB and LED industries as well. We strive to deliver quick, customized, and professional solutions to our clients by adhering to the highest standards of quality and service.

QUALITY

At Cofan, we stand behind every product we ship with rigorous testing and reporting included in every shipment. Inspection begins with components at our dock and concludes with system level testing of final products. Our Quality Assurance engineers and technicians are dedicated ensure the quality designed into our processes and every product we touch.

CERTIFICATIONS:

To establish and maintain the highest quality practices, we have certified our manufacturing facilities to ISO-9001 standards and our heat sink fabrication facility to the ISO 14001 standard (environmental management). We also comply with OHSAS 18001 for employee safety. All our standard products are UL and CSA certified, and RoHS compliant.



COFAN-USA

Silicon Valley

25,000 ft² Warehouse
3,000 ft² Assembly
35,000 ft² Administration



COFAN PRECISION

Silicon Valley

10,000 ft²
CNC Machining and
Sheet Metal Fabrication



Adding Value to our Standard Products

THERMAL SIMULATION

We provide the best thermal simulation services in the industry utilizing our 25+ years experience with 6SigmaET, Solidworks, Altium, Flotherm, ANSYS Icepack, and Pro/E software tools. Our capabilities reduce the time and costs related to development of the right thermal solution for our customers. We offer CFD analysis and consultation for the best possible arrangements and recommendations in thermal solutions. Whether you have a completely new product in need of a thermal solution or you have an existing product with non-functioning parts, COFAN is here to assist you.

MECHANICAL ENGINEERING

We offer a wide range of mechanical engineering solutions with extensive experience with extrusion, sheet metal enclosures, injection molding, vacuum forming, die-casting, and precision machining. Our diverse client base has provided us with a massive library of designs that we can easily adapt to any industry or application. Our local and offshore manufacturing and fabrication facilities make us the ideal partner from design through large scale manufacturing.

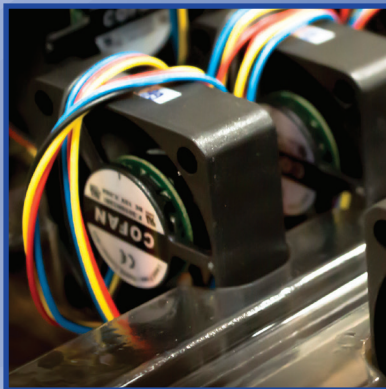
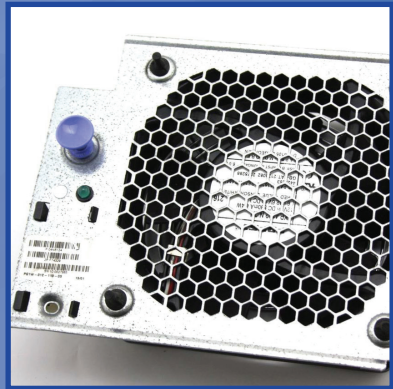
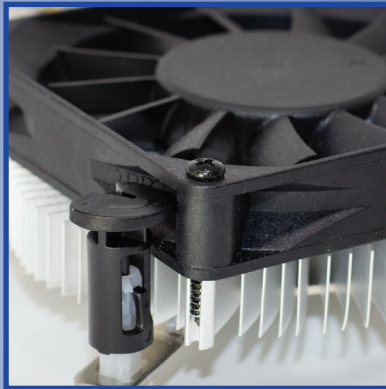
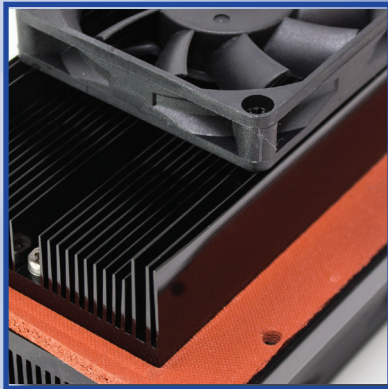
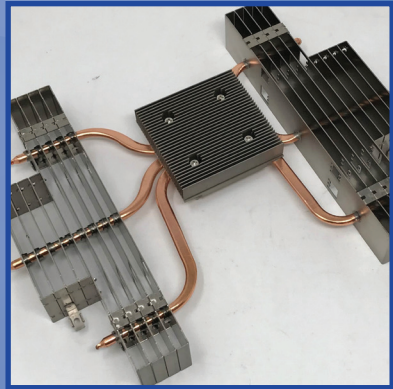
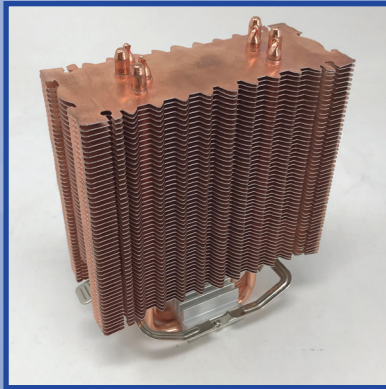
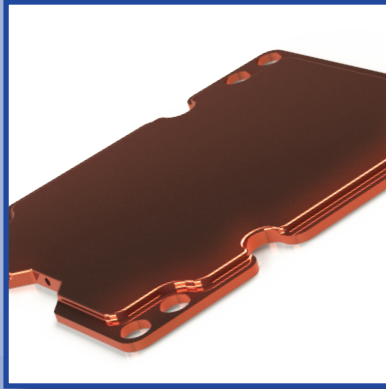
MANUFACTURING PROCESSES

- » Passivation
- » Grinding
- » Soldering
- » Water Jet Cutting
- » Turning
- » Press Brake Forming
- » Die Casting
- » Cold Forging
- » Drilling
- » Masking
- » Epoxy Isolation
- » Wirecut
- » Welding
- » Extrusion
- » Sheet Metal
- » Extrusion
- » Electrical Discharge Machining (EDM)
- » CNC Milling (-3, 4, 5 Axis)
- » Friction Stir Welding
- » Laser Cutting Machine
- » Punching
- » Stamped Metal Fin
- » Plastic (Injection Molding)
- » Skived Fins

FINISHING OPTIONS

- » Anodized
- » Degreased
- » Silk Screened
- » Painted
- » Nickel Plated
- » Electrophoresis Coated
- » Chromated (RoHS Compliant)
- » Antioxidation (For Copper)





GENERAL SPECIFICATIONS

Material	Frame, Impeller: Plastics, Aluminum, etc.
Operation Environment	Two ball bearing: -10°C~+70°C (35%~85%RH) FMB: -10°C~+50°C (35%~85%RH)
Storage Temperature	-40°C +75°C (Humidity: 35%~85%RH)
Insulation Resistance	5mA MAX. at 500 VAC 60Hz one minute (between frame and lead conductor)
Vibration Resistance Test	Applied 5.30Hz, 0.04 peak to peak amplitude, 30~500Hz, 2G peak amplitude for five minutes all three axis/5.3Hz,0.04
Shock Test	Under the conditions of 60G, 22ms (1/2 sine), two times to all three axis
Noise	Expressed as the value at 1m from air inlet side
Life Expectancy (L10 at 40°C)	
Two ball bearing type	30,000hr~100,000hr
FMB bearing type	30,000hr~60,000hr
Sleeve bearing type	20,000hr~30,000hr

STATUS & CONTROL FUNCTIONS

see each series for available options



FG (Tacho) Signal (FG)

The speed of the fan can be controlled via a voltage signal carried by a dedicated input wire.



Analogue Control Input

An additional wire is offered to output a voltage signal when the fan is stationary (operating). It is a useful functionality to identify a non-operating (operating) fan.



Rotation Detector Signal (RD)

An additional wire is offered to output an oscillating voltage output which can be used by the system to infer the fan speed.



Temperature Control

A NTC thermistor is connected to the fan and the fan speed varies with the temperature measured by the thermistor.



PWM Control

The speed of the fan can be controlled via a pulse-width-modulated (PWM) signal carried by a dedicated input wire.



IP Protection

Provide waterproof fans meeting ICE standard 60529.

DC BLOWERS INDEX

MODEL	LENGTH (mm)	WIDTH (mm)	HEIGHT (mm)	BEARING	VDC	CFM	PAGE
BGE04020	40	40	20	B,F	5,12	2.1-3.0	7
BGE05015	50	50	15	B,F	5,12,24	2.5-5.3	8
BGE12032B	60	60	15	B	12	2.4-4.6	9
BGE06025	60	60	25	B,F	12	5.6-15.1	10
BGE07515B	75	75	15	B	12	7.4-11.9	11
BGE07530	75	75	30	B,F	12,24	10.9-22.5	12
BGE09733B	97	97	33	B	12,24	16.3-28.8	13
BGN10525B	105	105	25	B	12	42-55	14
BGE12032B	120	120	32	B	12	24.6-37.5	15

CROSSFLOW FAN INDEX

MODEL	LENGTH (mm)	WIDTH (mm)	HEIGHT (mm)	VDC	CFM	PAGE
CBD30	143-390	50	48	12,24	20.6-49.4	16
CCD30	145-399	45	45	12,24	20.6-49.4	17
CBD40	145-472	60	60	12,24	24.7-91.8	18
CCD40	167-489	63	61	12,24	24.7-91.8	19
CED40	395	63	61	24	35.3	20
CAD43	145-472	60	60	24	25.3-88.3	21
CAD50	155-475	67	65	12,24	17.7-71.2	22
CBD50	166-476	70	70	12,24	29.4-170.7	23
CCD50	253	210	200	12	91.8	24
CFD60	120	120	25	12,24,48	50.72-103.82	25

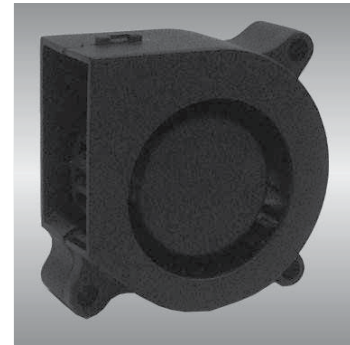
DC IMPELLERS INDEX

MODEL	LENGTH (mm)	WIDTH (mm)	HEIGHT (mm)	BEARING	VDC	CFM	PAGE
BGN10525	105	105	25	B	12	42-55	26
BGN13391B	133	133	91	B	24,48	224	27
BGN17569B	133	133	91	B	24,48	350-408	28
BGN19069B	190	190	68.5	B	24,48	294-371	29
BGN22071B	220	220	71	B	24,48	573-618	30
BGN22599B	225	225	99	B	24,48	683	31

40

BGE series

40X40X20mm



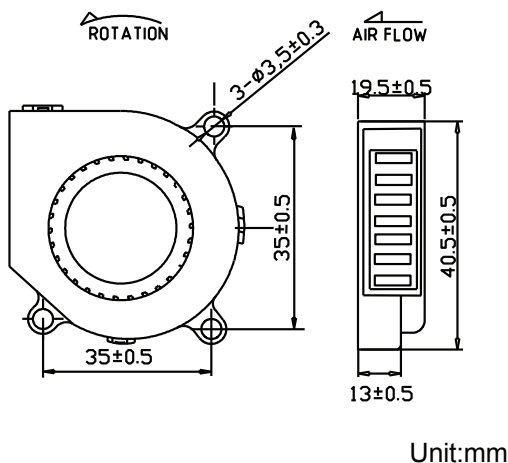
●General Specification

- Material ----- Frame & Impeller : PBT (UL94V-0)
- Operation Temp. -- Two ball bearing : -10°C~70°C
Fluid bearing : -10°C~50°C
- Lead Wires ----- UL 1007 AWG#26 (2 wires) / 26 (3 wire) / 26 (4 wire)
Red wire : + Yellow : Tach signal
Black wire : - Blue : PWM control
- Weight ----- 26g

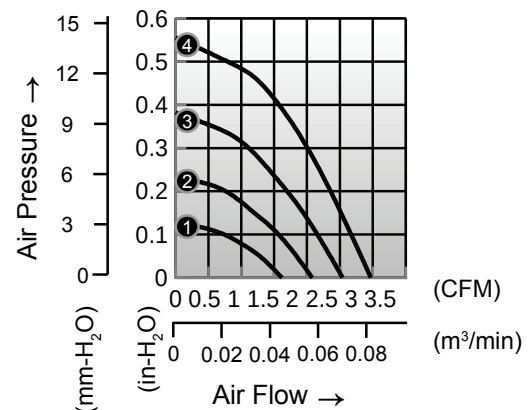
●Specification *Bearing system B:two ball bearing F:fluid bearing

Model	*Bearing System	Rated Voltage	Operating Voltage	Rated Current	Rated Speed	Maximum Air Flow	Maximum Air Pressure	Sound Level	P-Q Curve		
P/N	B / F	V	V	A	RPM	m³/min	CFM	mm-H₂O	In-H₂O	dB-A	No.
BGE04020 * 05M	B/F	5	4.5~5.5	0.20	4500	0.09	2.1	5.9	0.23	33	②
BGE04020 * 05H	B/F	5	4.5~5.5	0.25	5500	0.11	2.5	9.7	0.38	37	③
BGE04020 * 12L	B/F	12	7.0~13.2	0.08	3500	0.07	1.6	3.2	0.13	27	①
BGE04020 * 12M	B/F	12	7.0~13.2	0.10	4500	0.09	2.1	5.9	0.23	33	②
BGE04020 * 12H	B/F	12	7.0~13.2	0.15	5500	0.11	2.5	9.7	0.38	37	③
BGE04020 * 12U	B/F	12	7.0~13.2	0.18	6500	0.12	3.0	14.1	0.56	45	④

● Drawing



● Characteristic Curves



50

BGE series

50X50X15mm



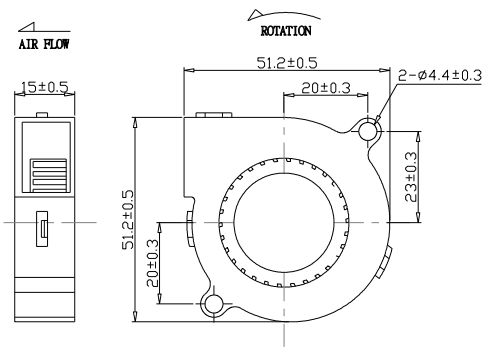
● General Specification

- Material ----- Frame & Impeller : PBT (UL94V-0)
- Operation Temp. -- Two ball bearing : -10°C~70°C
Fluid bearing : -10°C~50°C
- Lead Wires ----- UL 1007 AWG#24 (2 wires) / 26 (3 wire) / 26 (4 wire)
Red wire : + Yellow : Tach signal
Black wire : - Blue : PWM control
- Weight ----- 30g

● Specification *Bearing system B:two ball bearing F:fluid bearing

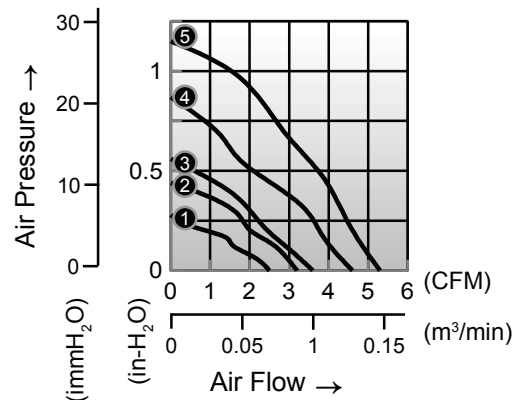
Model	*Bearing System	Rated Voltage	Operating Voltage	Rated Current	Rated Speed	Maximum Air Flow	Maximum Air Pressure	Sound Level	P-Q Curve		
P/N	B / F	V	V	A	RPM	m ³ /min	CFM	mm-H ₂ O	In-H ₂ O	dB-A	No.
BGE05015 * 05H	B/F	5	4.5~5.5	0.18	5500	0.10	3.6	14.1	0.56	37	③
BGE05015 * 05L	B/F	5	4.5~5.5	0.09	3500	0.07	2.5	7.0	0.28	27	①
BGE05015 * 05M	B/F	5	4.5~5.5	0.12	4500	0.09	3.2	11.2	0.44	33	②
BGE05015 * 05U	B/F	5	4.5~5.5	0.18	6500	0.13	4.6	22.0	0.87	45	④
BGE05115 * 12H	B/F	12	7.0~13.2	0.09	5500	0.10	3.6	14.1	0.56	37	③
BGE05115 * 12L	B/F	12	7.0~13.2	0.06	3500	0.07	2.5	7.0	0.28	27	①
BGE05115 * 12M	B/F	12	7.0~13.2	0.07	4500	0.09	3.2	11.2	0.44	33	②
BGE05115 * 12U	B/F	12	7.0~13.2	0.15	6500	0.13	4.6	22.0	0.87	45	④
BGE05115 * 12V	B/F	12	7.0~13.2	0.15	7500	0.16	5.3	29.3	1.15	45	⑤
BGE05015 * 24H	B/F	24	14.0~26.4	0.07	5500	0.10	3.6	14.1	0.56	37	③
BGE05015 * 24M	B/F	24	14.0~26.4	0.05	4500	0.09	3.2	11.2	0.44	33	②
BGE05015 * 24U	B/F	24	14.0~26.4	0.12	6500	0.13	4.6	22.0	0.87	45	④

● Drawing



Unit:mm

● Characteristic Curves



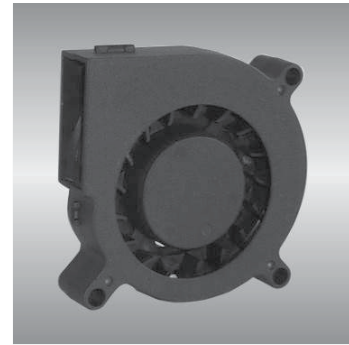
60

BGE series

60X60X15mm

● General Specification

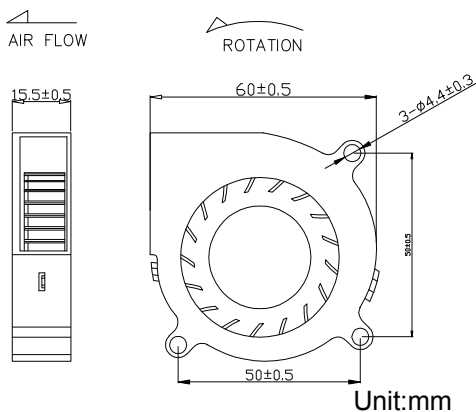
- Material ----- Frame & Impeller : PBT(UL94V-0)
- Operation Temp. -- Two ball bearing : -10°C~70°C
Fluid bearing : -10°C~50°C
- Lead Wires ----- UL 1007 AWG#28 (2 wires) / 26 (3 wire) / 26 (4 wire)
Red wire : + Yellow : Tach signal
Black wire : - Blue : PWM control
- Weight ----- 40g



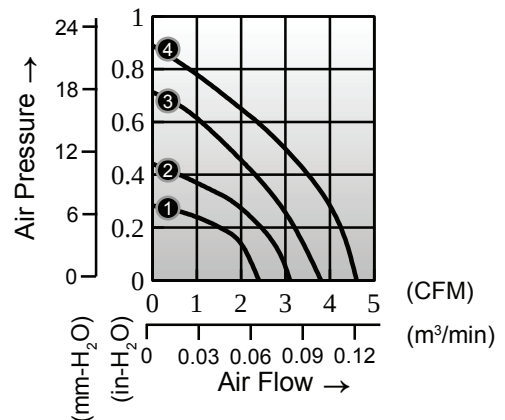
● Specification *Bearing system B:two ball bearing F:fluid bearing

Model	*Bearing System	Rated Voltage	Operating Voltage	Rated Current	Rated Speed	Maximum Air Flow	Maximum Air Pressure	Sound Level	P-Q Curve		
P/N	B / F	V	V	A	RPM	m ³ /min	CFM	mm-H ₂ O	In-H ₂ O	dB-A	No.
BGE06015B12L	B	12	7.0~13.2	0.07	3500	0.07	2.4	7.2	0.28	27	①
BGE06015B12M	B	12	7.0~13.2	0.09	4500	0.09	3.1	11.2	0.44	33	②
BGE06015B12H	B	12	7.0~13.2	0.11	5500	0.20	3.8	18.1	0.71	37	③
BGE06015B12U	B	12	7.0~13.2	0.13	6500	0.32	4.6	22.6	0.89	45	④

● Drawing



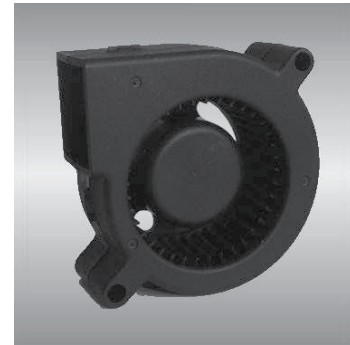
● Characteristic Curves



60

BGE series

60X60X25mm



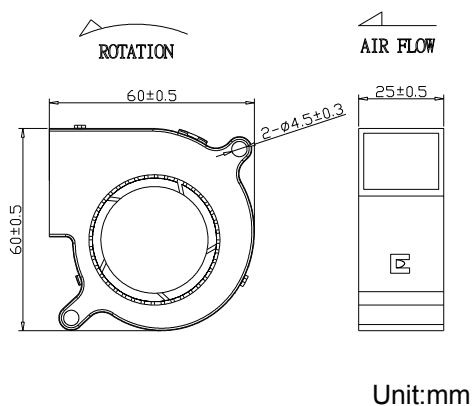
● General Specification

- Material ----- Frame & Impeller : PBT (UL94V-0)
- Operation Temp. -- Two ball bearing : -10°C~70°C
Fluid bearing : -10°C~50°C
- Lead Wires ----- UL 1007 AWG#26 (2 wires) / 26 (3 wire) / 28 (4 wire)
Red wire : + Yellow : Tach signal
Black wire : - Blue : PWM control
- Weight ----- 55g

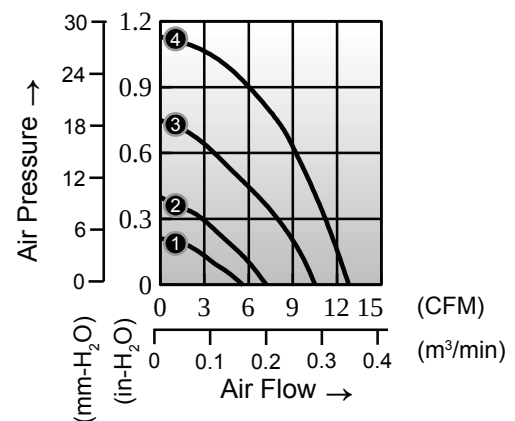
● Specification *Bearing system B:two ball bearing F:fluid bearing

Model	*Bearing System	Rated Voltage	Operating Voltage	Rated Current	Rated Speed	Maximum Air Flow		Maximum Air Pressure		Sound Level	P-Q Curve
P/N	B / F	V	V	A	RPM	m ³ /min	CFM	mm-H ₂ O	In-H ₂ O	dB-A	No.
BGE06025 * 12I	B/F	12	7.0~13.2	0.10	2500	0.16	5.6	5.4	0.21	24	①
BGE06025 * 12L	B/F	12	7.0~13.2	0.25	3500	0.20	7.2	10.2	0.40	27	②
BGE06025 * 12M	B/F	12	7.0~13.2	0.40	4500	0.30	10.5	19.2	0.75	41	③
BGE06025 * 12H	B/F	12	7.0~13.2	0.50	5500	0.36	12.8	28.8	1.13	47	④
BGE06025 * 12U	B/F	12	7.0~13.2	0.55	6500	0.43	15.1	36.2	1.43	50	⑤

● Drawing



● Characteristic Curves



75

BGE series

75X75X15mm



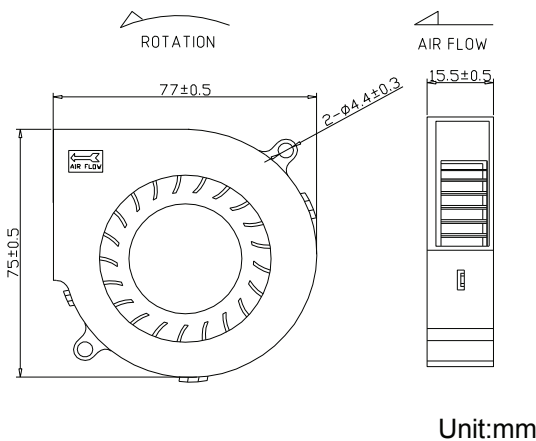
● General Specification

- Material ----- Frame & Impeller : PBT (UL94V-0)
- Operation Temp. -- Two ball bearing : -10°C~70°C
Fluid bearing : -10°C~50°C
- Lead Wires ----- UL 1007 AWG#24 (2 wires) / 26 (3 wire) / 28 (4 wire)
Red wire : + Yellow : Tach signal
Black wire : - Blue : PWM control
- Weight ----- 85g

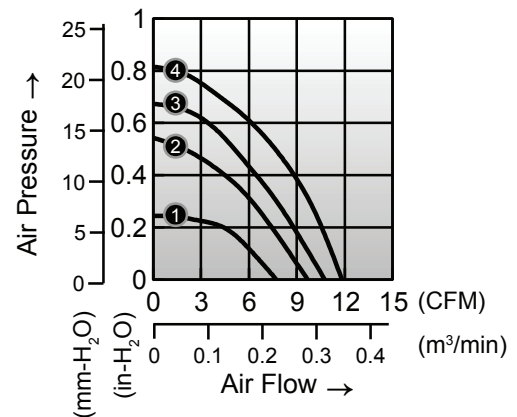
● Specification *Bearing system B:two ball bearing F:fluid bearing

Model	*Bearing System	Rated Voltage	Operating Voltage	Rated Current	Rated Speed	Maximum Air Flow	Maximum Air Pressure	Sound Level	P-Q Curve		
P/N	B / F	V	V	A	RPM	m ³ /min	CFM	mm-H ₂ O	In-H ₂ O	dB-A	No.
BGE07515B12L	B	12	7.0~13.2	0.21	4000	0.21	7.4	6.2	0.24	43	①
BGE07515B12M	B	12	7.0~13.2	0.32	4500	0.27	9.7	13.8	0.54	47	②
BGE07515B12H	B	12	7.0~13.2	0.40	5000	0.31	10.8	17.1	0.67	49	③
BGE07515B12U	B	12	7.0~13.2	0.50	5500	0.34	11.9	20.7	0.81	51	④

● Drawing



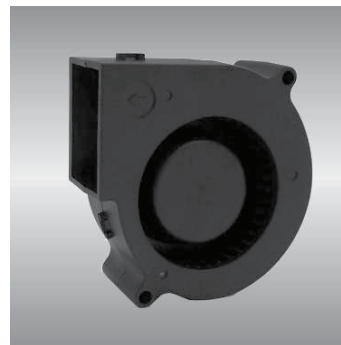
● Characteristic Curves



75

BGE series

75X75X30mm



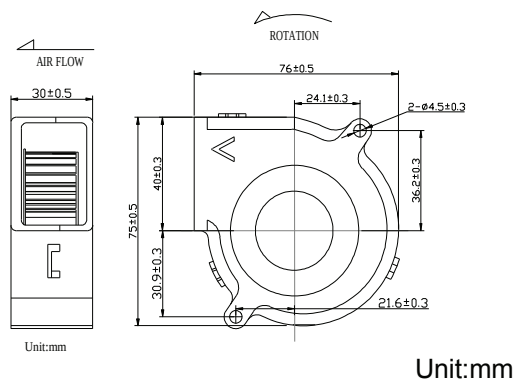
● General Specification

- Material ----- Frame & Impeller : PBT (UL94V-0)
- Operation Temp. -- Two ball bearing : -10°C~70°C
Fluid bearing : -10°C~50°C
- Lead Wires ----- UL 1007 AWG#24 (2 wires) / 26 (3 wire) / 28 (4 wire)
Red wire : + Yellow : Tach signal
Black wire : - Blue : PWM control
- Weight ----- 100g

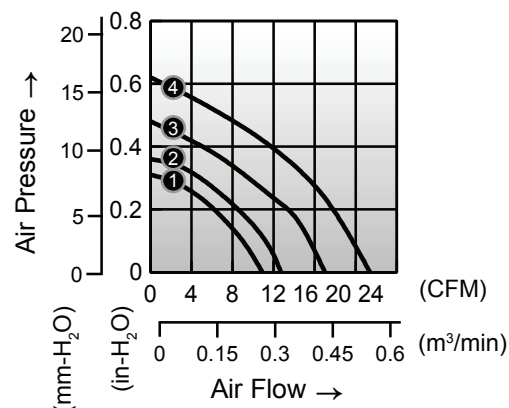
● Specification *Bearing system B:two ball bearing F:fluid bearing

Model	*Bearing System	Rated Voltage	Operating Voltage	Rated Current	Rated Speed	Maximum Air Flow	Maximum Air Pressure	Sound Level	P-Q Curve		
P/N	B / F	V	V	A	RPM	m³/min	CFM	mm-H ₂ O	In-H ₂ O	dB-A	No.
BGE07530 * 12J	B/F	12	7.0~13.2	0.24	2600	0.31	10.9	7.8	0.31	32	①
BGE07530 * 12L	B/F	12	7.0~13.2	0.30	3000	0.36	12.7	9.1	0.36	41	②
BGE07530 * 12M	B/F	12	7.0~13.2	0.38	3600	0.48	17.0	12.2	0.48	48	③
BGE07530 * 12H	B/F	12	7.0~13.2	0.45	4000	0.60	21.4	15.7	0.62	51	④
BGE07530 * 24J	B/F	24	14.0~26.4	0.13	2600	0.31	10.9	7.8	0.31	32	①
BGE07530 * 24L	B/F	24	14.0~26.4	0.16	3000	0.36	12.7	9.1	0.36	41	②
BGE07530 * 24M	B/F	24	14.0~26.4	0.22	3600	0.48	17.0	12.2	0.48	48	③
BGE07530 * 24H	B/F	24	14.0~26.4	0.26	4000	0.60	21.4	15.7	0.62	51	④
BGE07530 * 12U	B/F	12	7.0~13.2	0.56	4600	0.89	22.5	20.2	0.80	53	⑤
BGE07530 * 24U	B/F	24	14.0~26.4	0.30	4600	0.89	22.5	20.2	0.80	53	⑤

● Drawing



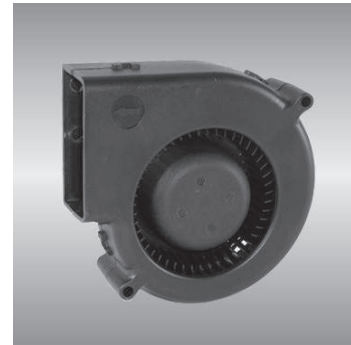
● Characteristic Curves



97

BGE series

97X97X33mm



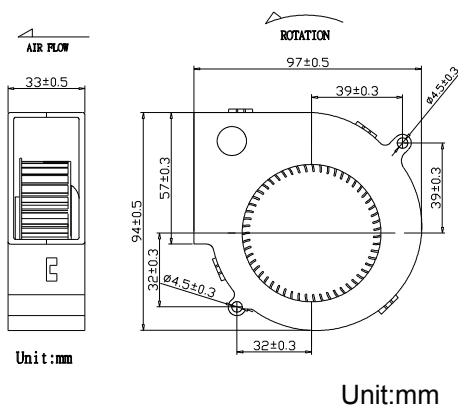
General Specification

- Material ----- Frame & Impeller : PBT (UL94V-0)
- Operation Temp. -- Two ball bearing : -10°C~70°C
Fluid bearing : -10°C~50°C
- Lead Wires ----- UL 1007 AWG#24 (2 wires) / 26 (3 wire) / 26 (4 wire)
Red wire : + Yellow : Tach signal
Black wire : - Blue : PWM control
- Weight ----- 150g

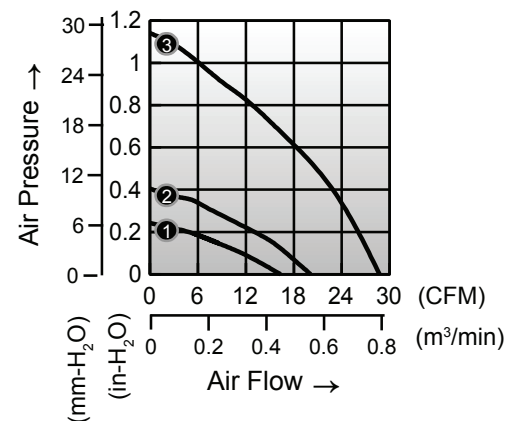
Specification *Bearing system B:two ball bearing F:fluid bearing

Model	*Bearing System	Rated Voltage	Operating Voltage	Rated Current	Rated Speed	Maximum Air Flow		Maximum Air Pressure		Sound Level	P-Q Curve
P/N	B / F	V	V	A	RPM	m ³ /min	CFM	mm-H ₂ O	In-H ₂ O	dB-A	No.
BGE09733B12L	B	12	7.0~13.2	0.21	2200	0.46	16.3	6.2	0.24	43	①
BGE09733B12M	B	12	7.0~13.2	0.32	2700	0.57	20.1	10.3	0.40	45	②
BGE09733B12H	B	12	7.0~13.2	0.60	3600	0.62	28.8	22.0	1.14	52	③
BGE09733B24L	B	24	14.0~26.4	0.14	2200	0.46	16.3	6.2	0.24	43	①
BGE09733B24M	B	24	14.0~26.4	0.18	2700	0.57	20.1	10.3	0.40	45	②
BGE09733B24H	B	24	14.0~26.4	0.32	3600	0.62	28.8	22.0	1.14	52	③

Drawing



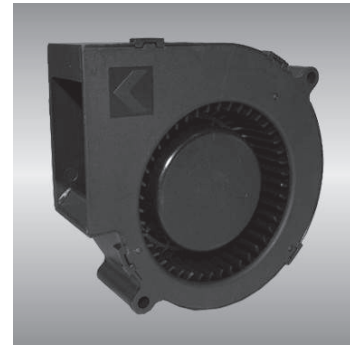
Characteristic Curves



97

BGF series

97X97X33mm



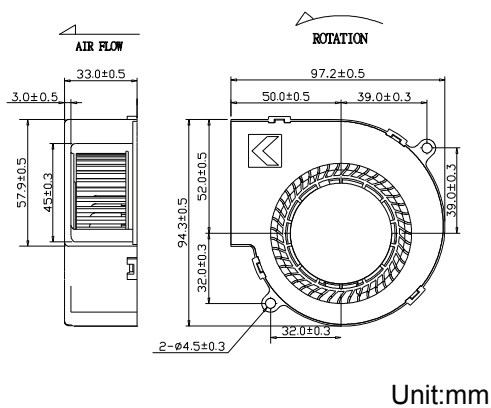
General Specification

- Material ----- Frame & Impeller : PBT (UL94V-0)
- Operation Temp. -- Two ball bearing : -10°C~70°C
Fluid bearing : -10°C~50°C
- Lead Wires ----- UL 1007 AWG#24 (2 wires) / 26 (3 wire) / 26 (4 wire)
Red wire : + Yellow : Tach signal
Black wire : - Blue : PWM control
- Weight ----- 180g

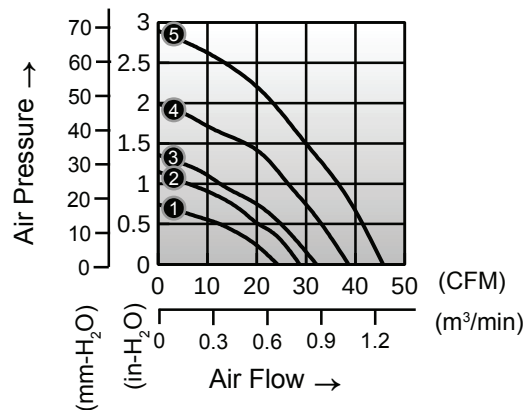
Specification *Bearing system B:two ball bearing F:fluid bearing

Model	*Bearing System	Rated Voltage	Operating Voltage	Rated Current	Rated Speed	Maximum Air Flow	Maximum Air Pressure	Sound Level	P-Q Curve		
P/N	B / F	V	V	A	RPM	m³/min	CFM	mm-H ₂ O	In-H ₂ O	dB-A	No.
BGF09733B12L	B	12	7.0~13.2	0.38	2700	0.69	24.2	18.9	0.75	48	①
BGF09733B12M	B	12	7.0~13.2	0.66	3200	0.82	28.7	29.2	1.15	52	②
BGF09733B12H	B	12	7.0~13.2	0.88	3600	0.91	32.1	34.5	1.36	55	③
BGF09733B12U	B	12	7.0~13.2	1.55	4200	1.09	38.6	50.6	1.99	59	④
BGF09733B12V	B	12	7.0~13.2	1.90	5000	1.29	45.6	73.6	2.90	63	⑤

Drawing

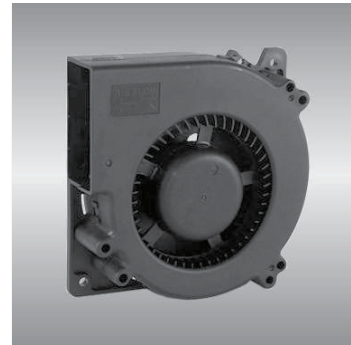


Characteristic Curves



120 BGE series

120X120X32mm



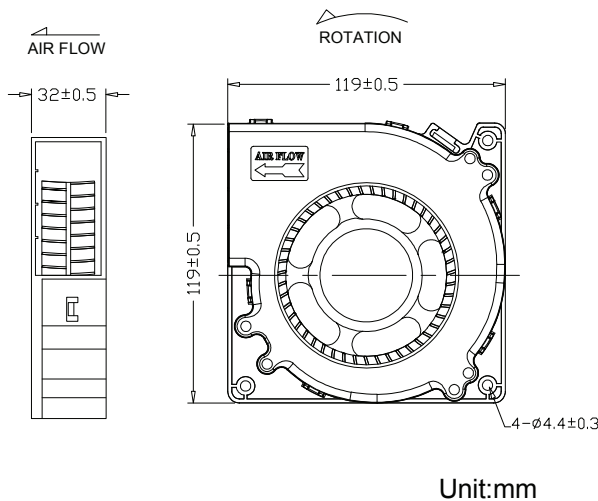
● General Specification

- Material ----- Frame & Impeller : PBT (UL94V-0)
- Operation Temp. -- Two ball bearing : -10°C~70°C
Fluid bearing : -10°C~50°C
- Lead Wires ----- UL 1007 AWG#22 (2 wires) / 24 (3 wire) / 24 (4 wire)
Red wire : + Yellow : Tach signal
Black wire : - Blue : PWM control
- Weight ----- 230g

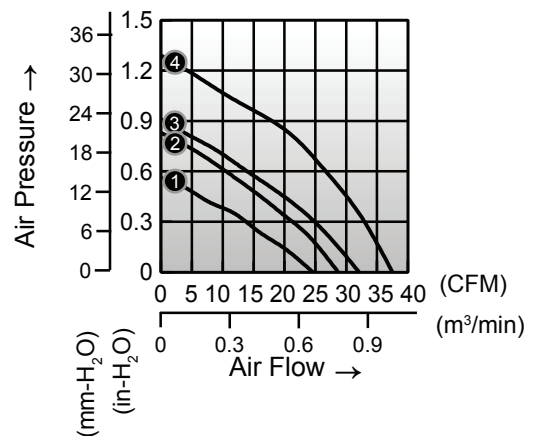
● Specification *Bearing system B:two ball bearing F:fluid bearing

Model	*Bearing System	Rated Voltage	Operating Voltage	Rated Current	Rated Speed	Maximum Air Flow		Maximum Air Pressure		Sound Level	P-Q Curve
P/N	B / F	V	V	A	RPM	m ³ /min	CFM	mm-H ₂ O	In-H ₂ O	dB-A	No.
BGE12032B12L	B	12	7.0~13.2	0.40	2100	0.70	24.6	18.9	0.56	45	①
BGE12032B12M	B	12	7.0~13.2	0.58	2500	0.82	28.8	29.2	0.83	47	②
BGE12032B12H	B	12	7.0~13.2	1.11	2800	0.91	32.1	34.5	1.06	49	③
BGE12032B12U	B	12	7.0~13.2	1.25	3100	1.06	37.5	50.6	1.29	52	④

● Drawing



● Characteristic Curves



30

DC Cross Flow Fan

CB Series



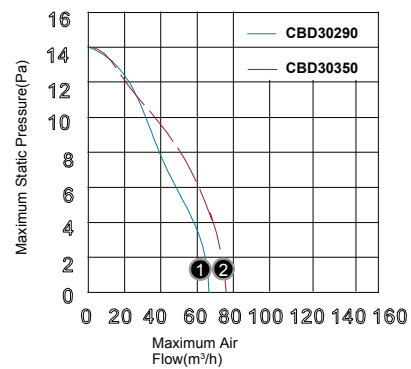
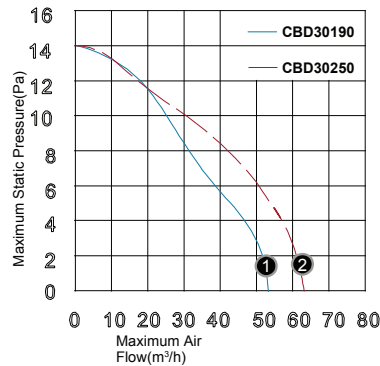
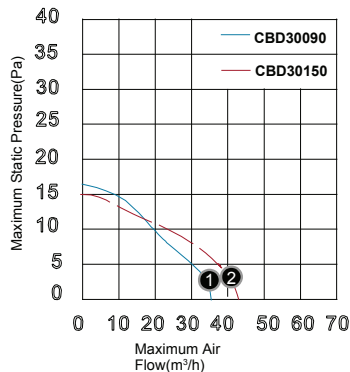
● General Specification

- Motor DC single phase brushless motor
- Material Frame: Steel / Impeller: Al alloy

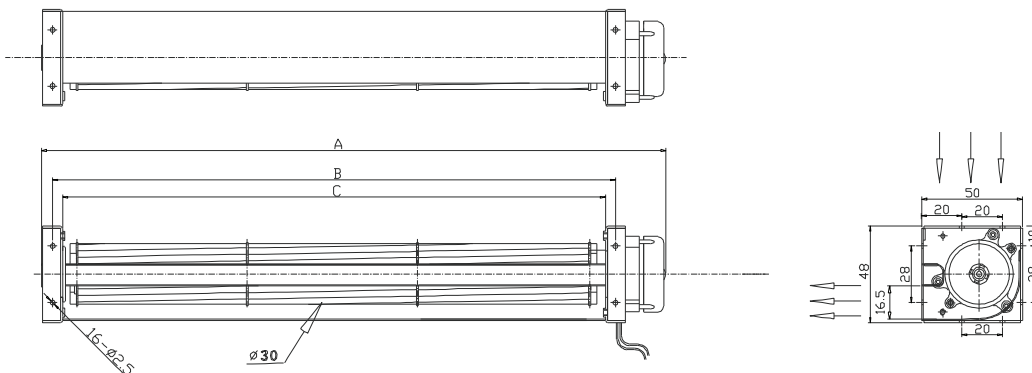
● Performance Specification

Model	Size			Rated Voltage	Rated Current	Rated Speed	Maximum Air Flow		Maximum Static Pressure		Sound Level	P-Q Curve
	A	B	C				m ³ /h	CFM	Pa	In-H ₂ O		
CBD30090B12M	143	108	98	12	0.10	3000	35	20.6	17	0.068	29	①
CBD30090B24M				24	0.05	3000	35	20.6	17	0.068	29	①
CBD30150B12M	200	170	160	12	0.12	2800	42	24.7	15	0.060	30	②
CBD30150B24M				24	0.07	2800	42	24.7	15	0.060	30	②
CBD30190B12M	222	208	198	12	0.14	2700	52	30.6	14	0.056	31	①
CBD30190B24M				24	0.08	2700	52	30.6	14	0.056	31	①
CBD30250B12M	293	258	248	12	0.16	2600	65	38.3	14	0.056	32	②
CBD30250B24M				24	0.09	2600	65	38.3	14	0.056	32	②
CBD30290B12M	341	310	300	12	0.18	2500	72	42.4	13	0.052	33	①
CBD30290B24M				24	0.09	2500	72	42.4	13	0.052	33	①
CBD30350B12M	390	362	352	12	0.20	2400	84	49.4	13	0.052	35	②
CBD30350B24M				24	0.10	2400	84	49.4	13	0.052	35	②

● P-Q Curves



● Drawing



30

DC Cross Flow Fan

CC Series



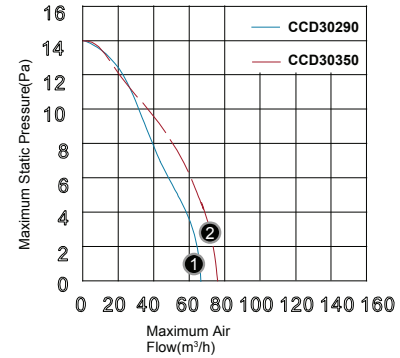
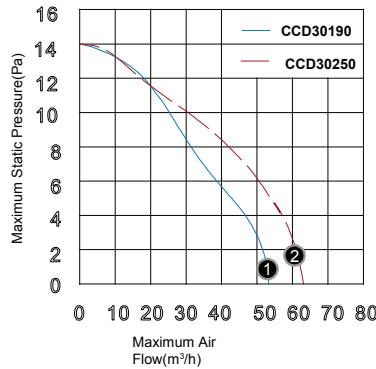
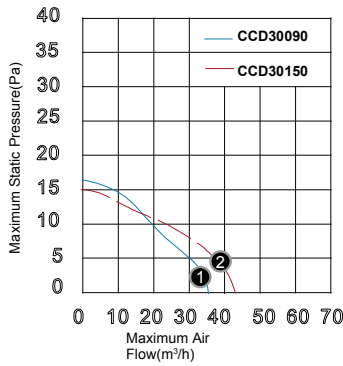
• General Specification

- Motor DC single phase brushless motor
- Material Frame: Steel / Impeller: Al alloy

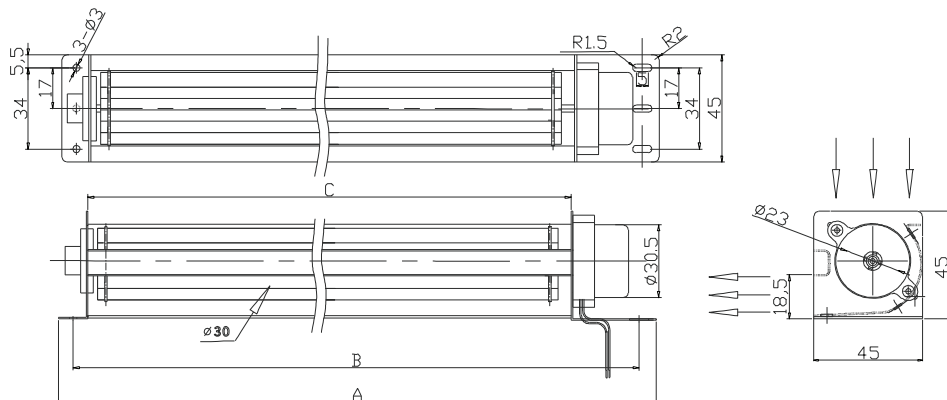
• Performance Specification

Model No.	Size			Rated Voltage V	Rated Current A	Rated Speed RPM	Maximum Air Flow		Maximum Static Pressure		Sound Level dBA	P-Q Curve No.
	A	B	C				m ³ /h	CFM	Pa	In-H ₂ O		
CCD30090B12M	145	132	98	12	0.10	3000	35	20.6	17	0.068	29	①
CCD30090B24M				24	0.05	3000	35	20.6	17	0.068	29	①
CCD30150B12M	207	194	160	12	0.12	2800	42	24.7	15	0.060	30	②
CCD30150B24M				24	0.07	2800	42	24.7	15	0.060	30	②
CCD30190B12M	245	232	198	12	0.14	2700	52	30.6	14	0.056	31	①
CCD30190B24M				24	0.08	2700	52	30.6	14	0.056	31	①
CCD30250B12M	295	282	248	12	0.16	2600	65	38.3	14	0.056	32	②
CCD30250B24M				24	0.09	2600	65	38.3	14	0.056	32	②
CCD30290B12M	347	334	300	12	0.18	2500	72	42.4	13	0.052	33	①
CCD30290B24M				24	0.09	2500	72	42.4	13	0.052	33	①
CCD30350B12M	399	386	352	12	0.20	2400	84	49.4	13	0.052	35	②
CCD30350B24M				24	0.10	2400	84	49.4	13	0.052	35	②

• P-Q Curves



• Drawing



40

DC Cross Flow Fan

CB Series



● General Specification

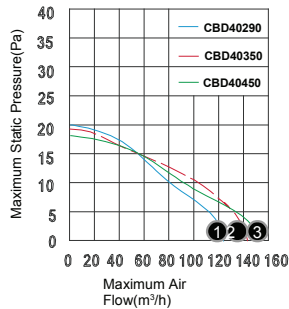
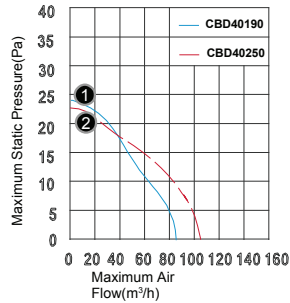
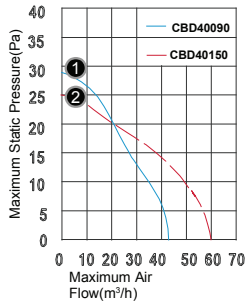
● Motor DC single / three phase brushless motor

● Material Frame: Steel / Impeller: Al alloy

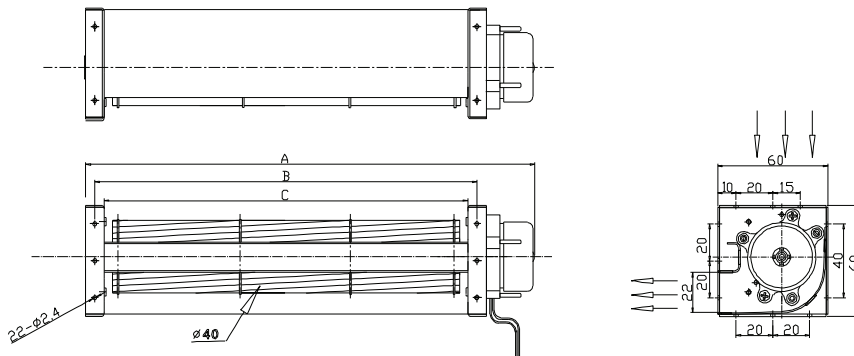
● Performance Specification

Model No.	Size			Rated Voltage V	Rated Current A	Rated Speed RPM	Maximum Air Flow		Maximum Static Pressure		Sound Level dBA	P-Q Curve No.
	A	B	C				m ³ /h	CFM	Pa	In-H ₂ O		
CBD40090B12M	145	108	98	12	0.12	3000	42	24.7	28	0.114	33	①
CBD40090B24M				24	0.07	3000	42	24.7	28	0.114	33	①
CBD40150B12M	210	170	160	12	0.18	2700	60	35.3	25	0.102	34	②
CBD40150B24M				24	0.10	2700	60	35.3	25	0.102	34	②
CBD40190B12M	230	208	198	12	0.20	2500	84	49.4	25	0.098	35	①
CBD40190B24M				24	0.12	2500	84	49.4	25	0.098	35	①
CBD40250B12M	300	260	250	12	0.23	2400	107	63.0	24	0.094	36	②
CBD40250B24M				24	0.13	2400	107	63.0	24	0.094	36	②
CBD40290B12M	352	310	300	12	0.26	2300	126	74.2	21	0.083	37	①
CBD40290B24M				24	0.14	2300	126	74.2	21	0.083	37	①
CBD40350B12M	417	358	348	12	0.29	2200	144	84.7	20	0.079	38	②
CBD40350B24M				24	0.16	2200	144	84.7	20	0.079	38	②
CBD40450B12M	472	430	420	12	0.32	2000	156	91.8	18	0.071	39	③
CBD40450B24M				24	0.17	2000	156	91.8	18	0.071	39	③

● P-Q Curves



● Drawing



40

DC Cross Flow Fan

CC Series



• General Specification

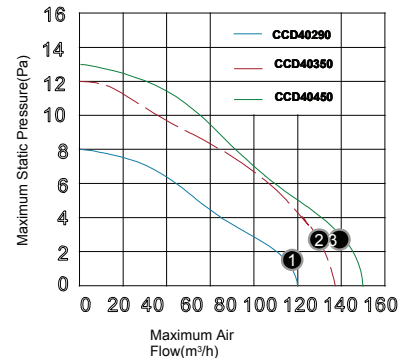
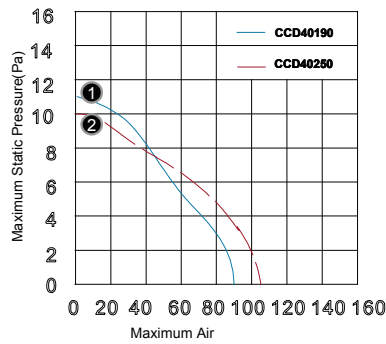
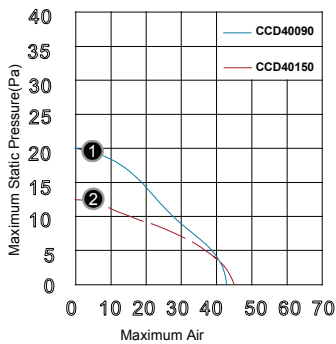
• Motor DC single / three phase brushless motor

• Material Frame: Steel / Impeller: Al alloy

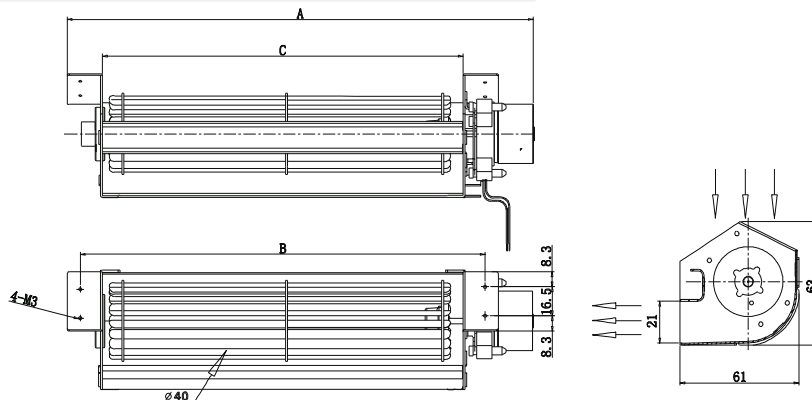
• Performance Specification

Model No.	Size			Rated Voltage V	Rated Current A	Rated Speed RPM	Maximum Air Flow		Maximum Static Pressure		Sound Level dBA	P-Q Curve No.
	A	B	C				m ³ /h	CFM	Pa	In-H ₂ O		
CCD40090B12M	167	121	98	12	0.12	3000	42	24.7	28	0.114	33	①
CCD40090B24M				24	0.07	3000	42	24.7	28	0.114	33	①
CCD40150B12M	229	183	160	12	0.18	2700	60	35.3	25	0.102	34	②
CCD40150B24M				24	0.10	2700	60	35.3	25	0.102	34	②
CCD40190B12M	267	221	198	12	0.20	2500	84	49.4	25	0.098	35	①
CCD40190B24M				24	0.12	2500	84	49.4	25	0.098	35	①
CCD40250B12M	319	273	250	12	0.23	2400	107	63.0	24	0.094	36	②
CCD40250B24M				24	0.13	2400	107	63.0	24	0.094	36	②
CCD40290B12M	369	323	300	12	0.26	2300	126	74.2	21	0.083	37	①
CCD40290B24M				24	0.14	2300	126	74.2	21	0.083	37	①
CCD40350B12M	417	371	348	12	0.29	2200	144	84.7	20	0.079	38	②
CCD40350B24M				24	0.16	2200	144	84.7	20	0.079	38	②
CCD40450B12M	489	443	420	12	0.32	2000	156	91.8	18	0.071	39	③
CCD40450B24M				24	0.17	2000	156	91.8	18	0.071	39	③

• P-Q Curves



• Drawing



40

DC Cross Flow Fan

CE Series



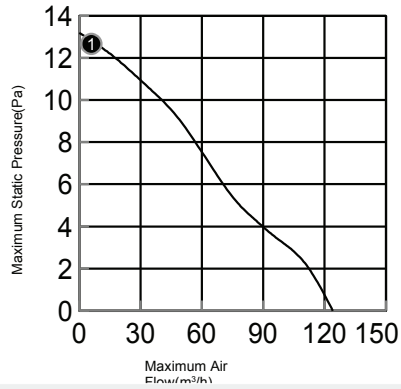
● General Specification

- Motor DC single / three phase brushless motor
- Material Frame: Steel / Impeller: Al alloy

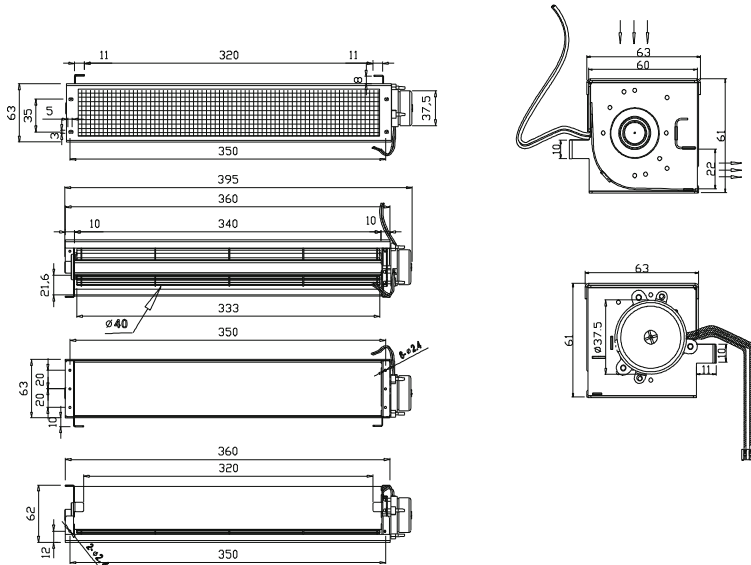
● Performance Specification

Model	Size			Rated Voltage	Rated Current	Rated Speed	Maximum Air Flow		Maximum Static Pressure		Sound Level	P-Q Curve
	A	B	C				m ³ /h	CFM	Pa	in-H ₂ O		
CED40340B24M	395	360	340	24	0.16	2200	60	35.3	13	0.050	34	⊙

● P-Q Curves



● Drawing



43

DC Cross Flow Fan CA Series



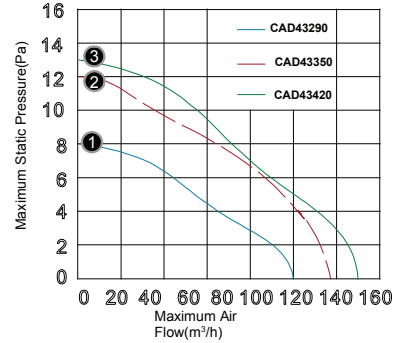
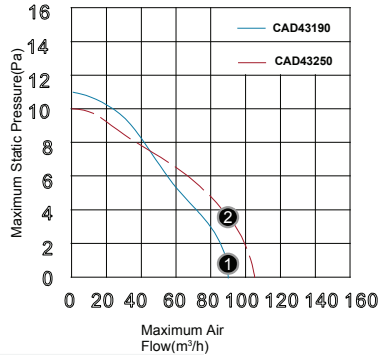
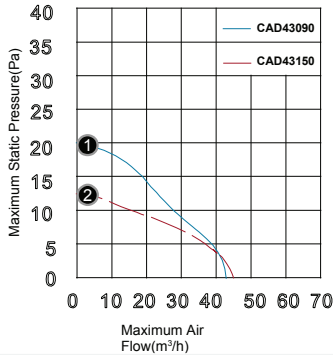
● General Specification

- Motor DC single / three phase brushless motor
- Material Frame: Steel / Impeller: Al alloy

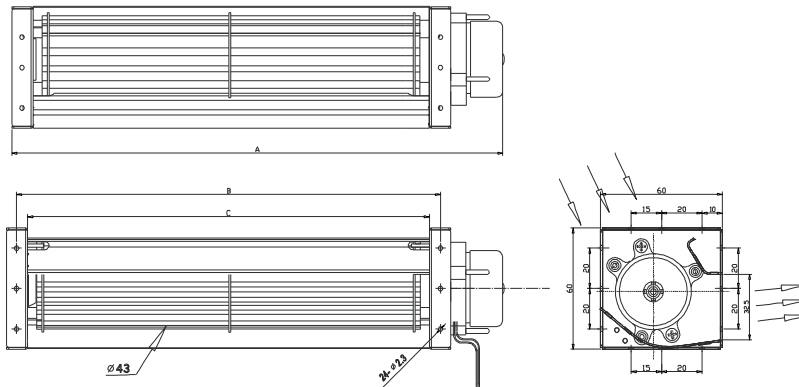
● Performance Specification

Model No.	Size			Rated Voltage V	Rated Current A	Rated Speed RPM	Maximum Air Flow		Maximum Static Pressure		Sound Level dBA	P-Q Curve No.
	A	B	C				m ³ /h	CFM	Pa	In-H ₂ O		
CAD43090B12M	145	108	98	12	0.12	3000	43	25.3	20	0.079	36	①
CAD43090B24M				24	0.07	3000	43	25.3	20	0.079	36	①
CAD43150B12M	210	170	160	12	0.18	2700	75	44.1	12	0.047	37	②
CAD43150B24M				24	0.10	2700	75	44.1	12	0.047	37	②
CAD43190B12M	230	208	198	12	0.20	2500	95	55.9	11	0.043	39	①
CAD43190B24M				24	0.12	2500	95	55.9	11	0.043	39	①
CAD43250B12M	300	160	250	12	0.23	2400	102	60.0	10	0.039	40	②
CAD43250B24M				24	0.13	2400	102	60.0	10	0.039	40	②
CAD43290B12M	352	310	300	12	0.26	2300	120	70.6	8	0.031	41	①
CAD43290B24M				24	0.14	2300	120	70.6	8	0.031	41	①
CAD43350B12M	417	358	348	12	0.29	2100	138	81.2	12	0.047	41	②
CAD43350B24M				24	0.16	2100	138	81.2	12	0.047	41	②
CAD43420B12M	472	430	420	12	0.32	2000	150	88.3	13	0.051	38	③
CAD43420B24M				24	0.17	2000	150	88.3	13	0.051	38	③

● P-Q Curves



● Drawing



50

DC Cross Flow Fan

CA Series



● General Specification

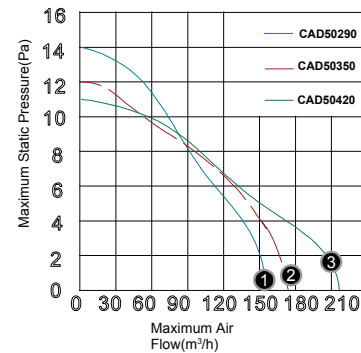
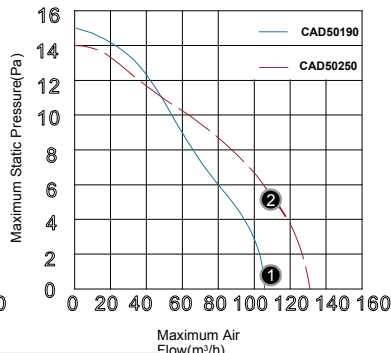
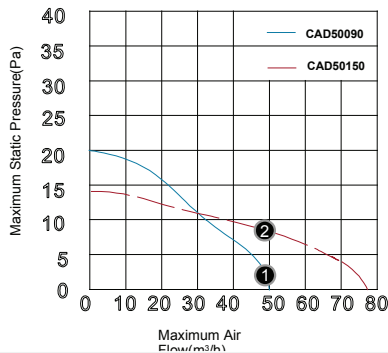
● Motor DC single / three phase brushless motor

● Material Frame: Steel / Impeller: Al alloy

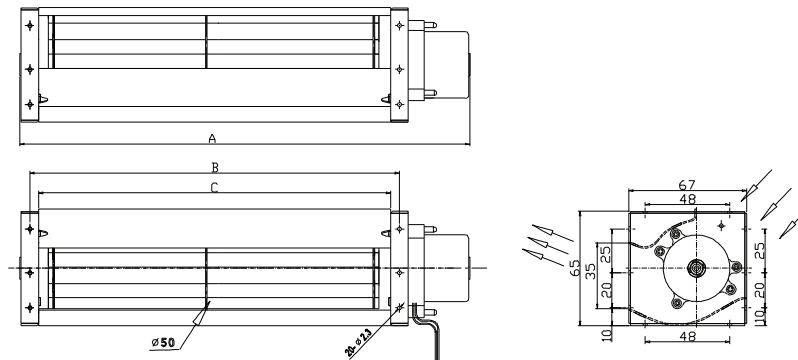
● Performance Specification

Model	Size			Rated Voltage	Rated Current	Rated Speed	Maximum Air Flow		Maximum Static Pressure		Sound Level	P-Q Curve
	A	B	C				m ³ /h	CFM	Pa	In-H ₂ O		
No.	mm			V	A	RPM					dBA	No.
CAD50090B12M	155	110	100	12	0.16	2700	30	17.7	19	0.076	38	①
CAD50090B24M				24	0.10	2700	30	17.7	19	0.076	38	①
CAD50150B12M	215	170	160	12	0.21	2500	45	26.5	13	0.052	39	②
CAD50150B24M				24	0.12	2500	45	26.5	13	0.052	39	②
CAD50190B12M	256	210	200	12	0.28	2600	62	36.5	14	0.056	41	①
CAD50190B24M				24	0.15	2600	62	36.5	14	0.056	41	①
CAD50250B12M	302	260	250	12	0.35	2500	80	47.1	13	0.052	42	②
CAD50250B24M				24	0.18	2500	80	47.1	13	0.052	42	②
CAD50290B12M	340	310	300	12	0.35	2500	91	53.6	13	0.052	43	①
CAD50290B24M				24	0.18	2500	91	53.6	13	0.052	43	①
CAD50350B12M	410	370	360	12	0.40	2400	105	61.8	13	0.052	44	②
CAD50350B24M				24	0.21	2400	105	61.8	13	0.052	44	②
CAD50420B12M	475	430	420	12	0.46	2300	121	71.2	12	0.048	46	③
CAD50420B24M				24	0.23	2300	121	71.2	12	0.048	46	③

● P-Q Curves



● Drawing



50

DC Cross Flow Fan

CB Series



• General Specification

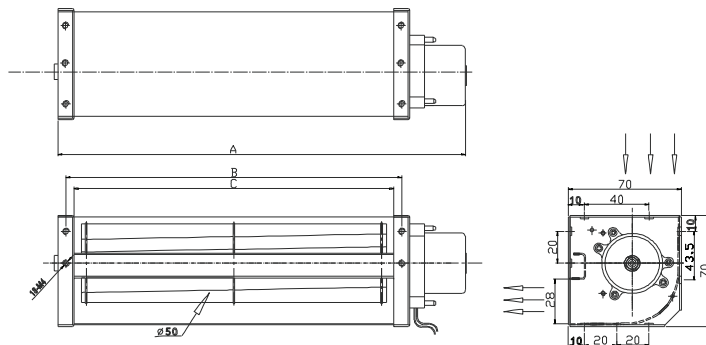
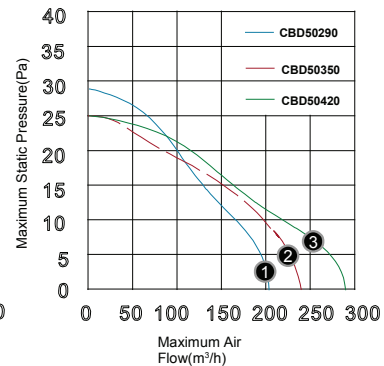
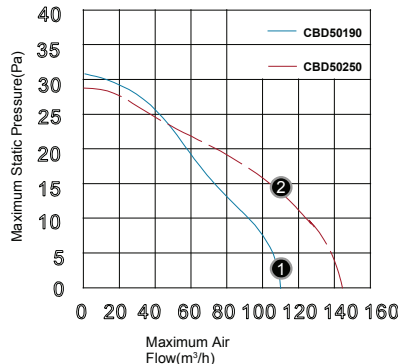
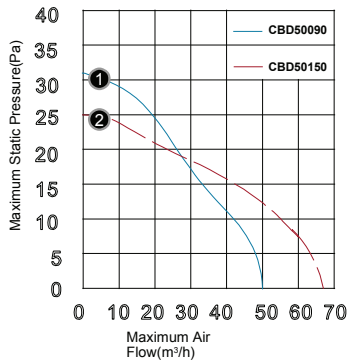
• Motor DC single / three phase brushless motor

• Material Frame: Steel / Impeller: Al alloy

• Performance Specification

Model No.	Size			Rated Voltage V	Rated Current A	Rated Speed RPM	Maximum Air Flow		Maximum Static Pressure		Sound Level dBA	P-Q Curve No.
	A	B	C				m ³ /h	CFM	Pa	In-H ₂ O		
CBD50090B12M	166	108	98	12	0.20	2500	50	29.4	31	0.126	36	①
CBD50090B24M				24	0.11	2500	50	29.4	31	0.126	36	①
CBD50150B12M	229	168	158	12	0.30	2100	67	39.4	25	0.102	33	②
CBD50150B24M				24	0.16	2100	67	39.4	25	0.102	33	②
CBD50190B12M	266	208	198	12	0.56	2600	108	63.6	31	0.126	45	①
CBD50190B24M				24	0.30	2600	108	63.6	31	0.126	45	①
CBD50250B12M	310	258	248	12	0.73	2450	143	84.2	29	0.118	45	②
CBD50250B24M				24	0.36	2450	143	84.2	29	0.118	45	②
CBD50290B12M	390	308	363	12	0.79	2300	205	120.6	27	0.110	46	①
CBD50290B24M				24	0.40	2300	205	120.6	27	0.110	46	①
CBD50350B12M	422	368	358	12	0.90	2200	238	140.1	25	0.102	46	②
CBD50350B24M				24	0.46	2200	238	140.1	25	0.102	46	②
CBD50420B12M	476	428	418	12	0.93	2200	290	170.7	25	0.102	47	③
CBD50420B24M				24	0.48	2200	290	170.7	25	0.102	47	③

• P-Q Curves



50

DC Cross Flow Fan

CC Series



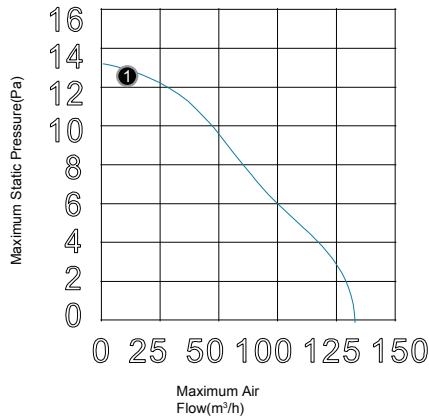
General Specification

- Motor DC single / three phase brushless motor
- Material Frame: Steel / Impeller: Al alloy

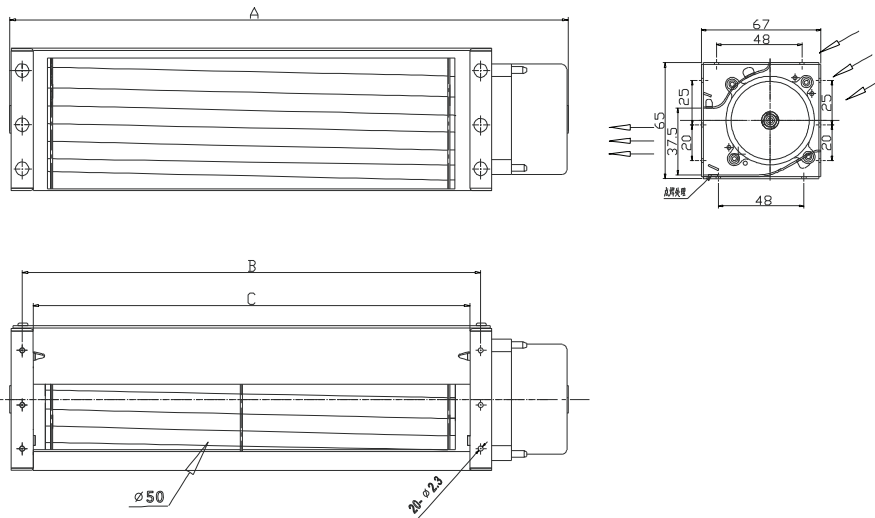
Performance Specification

Model	Size			Rated Voltage	Rated Current	Rated Speed	Air Flow		Static Pressure		Level	Curve
	A	B	C				m ³ /h	CFM	Pa	In-H ₂ O		
CCD50190B12M	253	210	200	12	0.24	2600	156	91.8	18	0.071	46	①

P-Q Curves



Drawing



60

DC Cross Flow Fan

CF Series



• General Specification

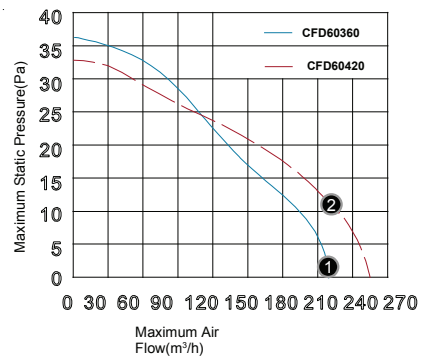
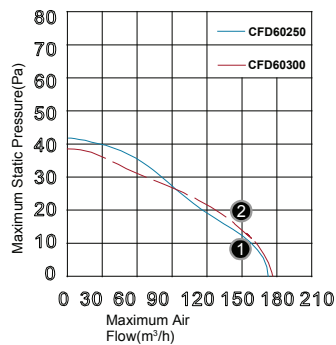
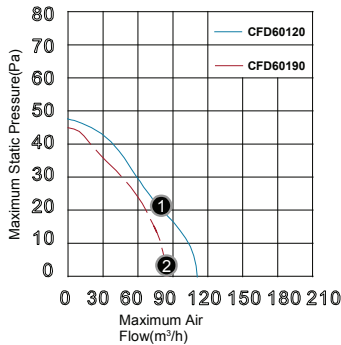
• Motor DC single / three phase brushless motor

• Material Frame: Steel / Impeller: Al alloy

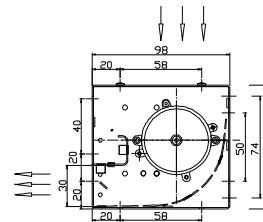
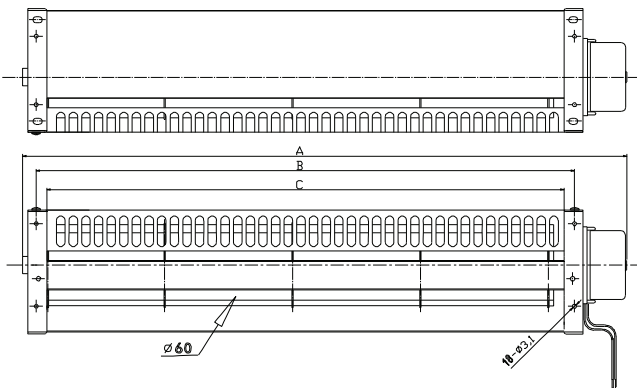
• Performance Specification

Model No.	Size			Rated Voltage V	Rated Current A	Rated Speed RPM	Maximum Air Flow		Maximum Static Pressure		Sound Level dBA	P-Q Curve No.
	A	B	C				m ³ /h	CFM	Pa	In-H ₂ O		
CFD60120B12M	186	138	123	12	0.74	2600	102	60.0	49	0.197	44	①
CFD60120B24M				24	0.35	2600	102	60.0	49	0.197	44	①
CFD60190B12M	246	199	184	12	1.00	2400	139	81.8	45	0.181	44	②
CFD60190B24M				24	0.47	2400	139	81.8	45	0.181	44	②
CFD60250B12M	307	259	245	12	1.20	2200	169	99.5	41	0.165	44	①
CFD60250B24M				24	0.55	2200	169	99.5	41	0.165	44	①
CFD60300B12M	368	321	306	12	1.35	2100	192	113.0	39	0.157	45	②
CFD60300B24M				24	0.63	2100	192	113.0	39	0.157	45	②
CFD60360B12M	430	383	368	12	1.45	2000	212	124.8	37	0.150	46	①
CFD60360B24M				24	0.67	2000	212	124.8	37	0.150	46	①
CFD60420B12M	492	444	429	12	1.53	1900	254	149.5	33	0.134	47	②
CFD60420B24M				24	0.73	1900	254	149.5	33	0.134	47	②

• P-Q Curves

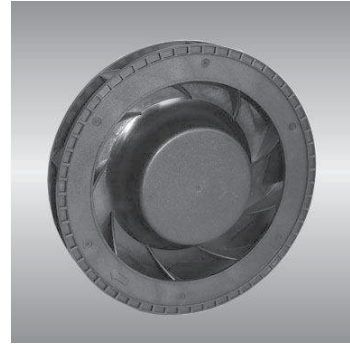


• Drawing



105 BG series

Ø105X25mm



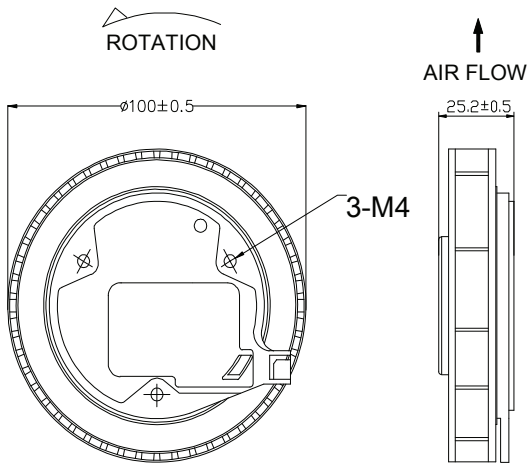
● General Specification

- Motor / DC brushless motor
- Material / Frame : plastic (94V-0); Impeller : plastic (94V-0)
- Operation Temp. / -10°C~70°C; Storage temp. / -40°C~80°C
- Bearing / Two ball precision bearing
- Insulator Class "B"
- Weight / 0.13kg

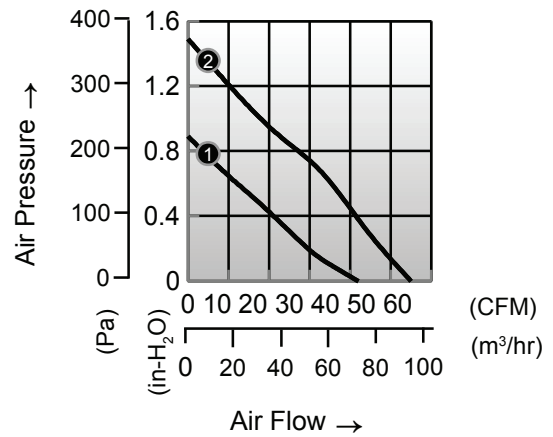
● Specification

Model	Bearing System	Rated Voltage	Rated Current	Rated Speed	Maximum Air Flow		Maximum Static Pressure		Sound Level	P-Q Curve
Part No.	B / S / F	V	A	RPM	m³/hr	CFM	Pa	In-H ₂ O	dBA	No.
BGN10525B12H	B	12	0.5	4300	71	42	222	0.89	53	①
BGN10525B12U	B	12	1.1	5300	93	55	371	1.49	58	②

● Drawing

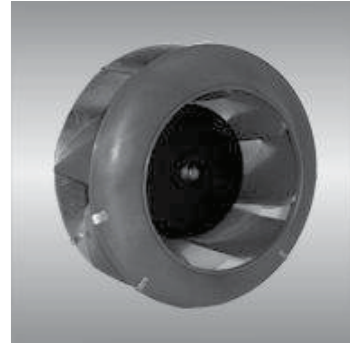


● Characteristic Curves



133 BG series

Ø133X91mm



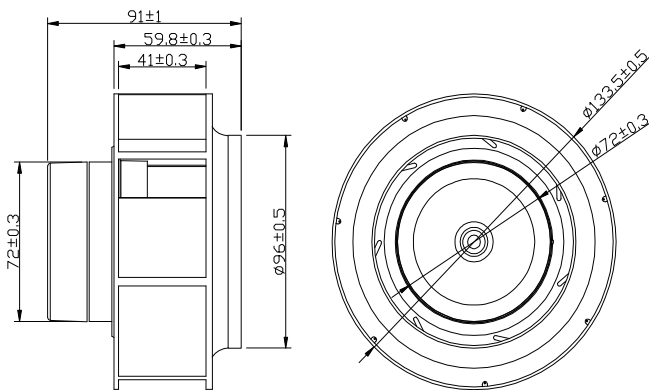
● General Specification

- Motor / DC brushless motor
- Material / Frame : die cast aluminum; Impeller : plastic (94V-0)
- Rotational direction CW view from front face
- Bearing / Two ball precision bearing
- Insulator Class "B"
- Weight / 0.7kg

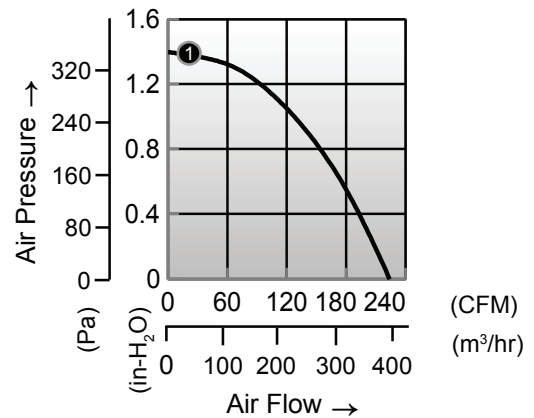
● Specification

Model	Bearing System	Rated Voltage	Rated Current	Rated Speed	Maximum Air Flow		Maximum Static Pressure		Sound Level	P-Q Curve
Part No.	B / S / F	V	A	RPM	m ³ /hr	CFM	Pa	In-H ₂ O	dBA	No.
BGN13391B24U	B	24	1.6	4000	380	224	348	1.40	65	①
BGN13391B48U	B	48	0.8	4000	380	224	348	1.40	65	①

● Drawing



● Characteristic Curves



175 BG series

Ø175X68.5mm



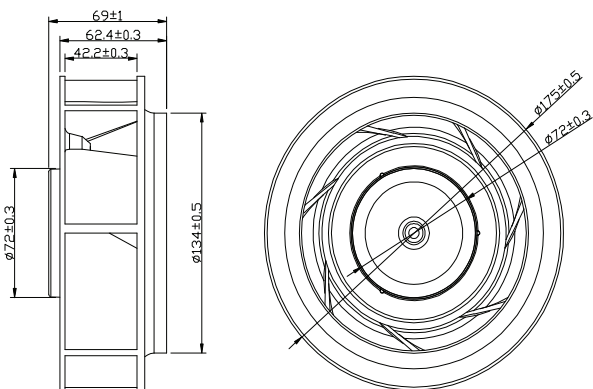
● General Specification

- Motor / DC brushless motor
- Material / Frame : die cast aluminum; Impeller : plastic (94V-0)
- Rotational direction CW view from front face
- Bearing / Two ball precision bearing
- Insulator Class "B"
- Weight / 0.7kg

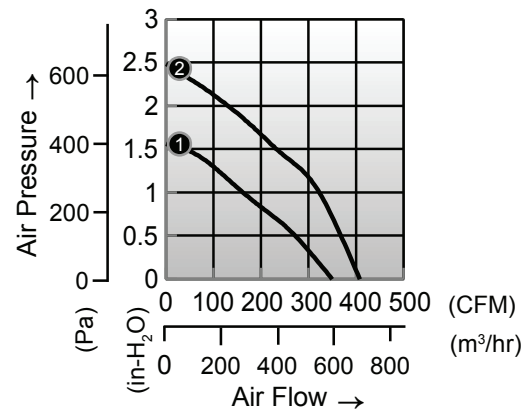
● Specification

Model	Bearing System	Rated Voltage	Rated Current	Rated Speed	Maximum Air Flow	Maximum Static Pressure	Sound Level	P-Q Curve		
Part No.	B / S / F	V	A	RPM	m ³ /hr	CFM	Pa	In-H ₂ O	dBA	No.
BGN17569B24H	B	24	1.5	3300	594	350	389	1.56	67	①
BGN17569B48H	B	48	1.2	3300	594	350	389	1.56	67	①
BGN17569B48U	B	48	1.2	4200	693	408	618	2.48	72	②

● Drawing



● Characteristic Curves



190 BG series

Ø190X68.5mm



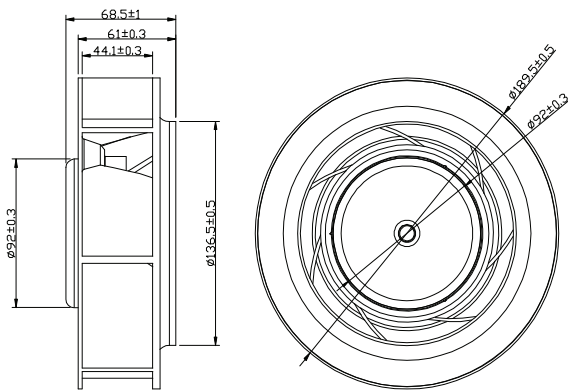
● General Specification

- Motor / DC three-phase brushless motor
- Material / Frame : die cast aluminum; Impeller : plastic (94V-0)
- Rotational direction CW view from front face
- Bearing / Two ball precision bearing
- Insulator Class "B"
- Weight / 1.0kg (BGN); 1.3kg (BGM)

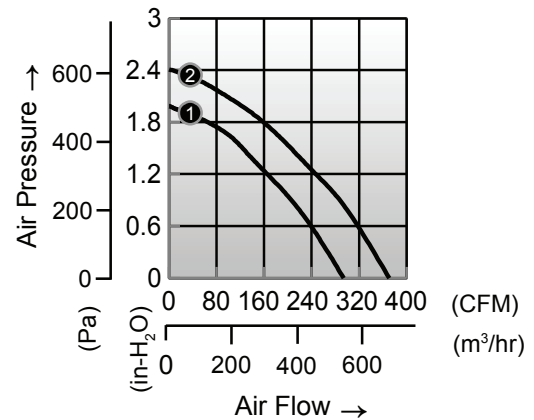
● Specification

Model	Bearing System	Rated Voltage	Rated Current	Rated Speed	Maximum Air Flow		Maximum Static Pressure		Sound Level	P-Q Curve
Part No.	B / S / F	V	A	RPM	m ³ /hr	CFM	Pa	In-H ₂ O	dBA	No.
BGN19069B24U-72	B	24	3.5	3000	630	371	495	1.99	68	①
BGN19069B48U-72	B	48	1.8	3000	630	371	495	1.99	68	①
BGM19069B24U-92	B	24	3.5	3000	500	294	600	2.41	73	②
BGM19069B48U-92	B	48	1.8	3000	500	294	600	2.41	73	②

● Drawing



● Characteristic Curves



220 BG series

Ø220X71mm



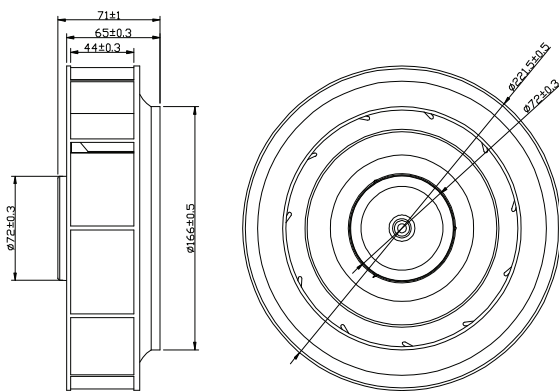
● General Specification

- Motor / DC three-phase brushless motor
- Material / Frame : die cast aluminum; Impeller : plastic (94V-0)
- Rotational direction CW view from front face
- Bearing / Two ball precision bearing
- Insulator Class "B"
- Weight / 1.1kg (BGN); 1.4kg (BGM)

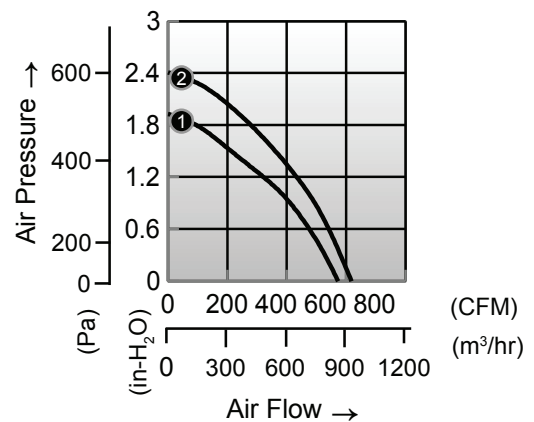
● Specification

Model	Bearing System	Rated Voltage	Rated Current	Rated Speed	Maximum Air Flow		Maximum Static Pressure		Sound Level	P-Q Curve
Part No.	B / S / F	V	A	RPM	m ³ /hr	CFM	Pa	In-H ₂ O	dBA	No.
BGN22071B24H-72	B	24	4.5	2800	974	573	480	1.93	65	①
BGN22071B48H-72	B	48	2.3	2800	974	573	480	1.93	65	①
BGM22071B24H-92	B	24	4.5	3150	1050	618	600	2.41	73	②
BGM22071B48H-92	B	48	2.3	3150	1050	618	600	2.41	73	②

● Drawing

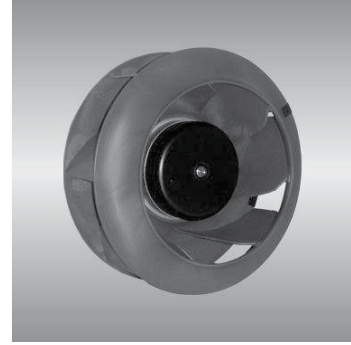


● Characteristic Curves



225 BG series

Ø225X99mm



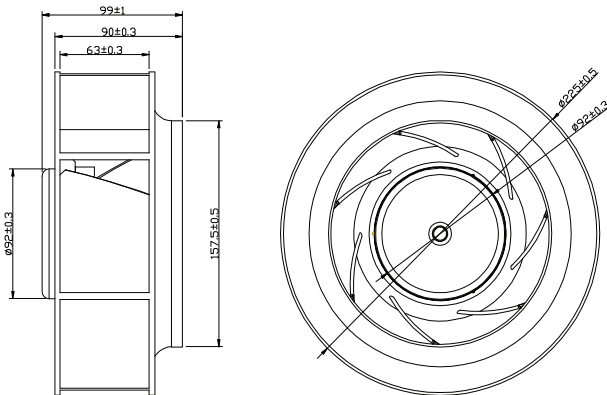
● General Specification

- Motor / DC three-phase brushless motor
- Material / Frame : die cast aluminum; Impeller : plastic (94V-0)
- Rotational direction CW view from front face
- Bearing / Two ball precision bearing
- Insulator Class "B"
- Weight / 1.5kg

● Specification

Model	Bearing System	Rated Voltage	Rated Current	Rated Speed	Maximum Air Flow	Maximum Static Pressure	Sound Level	P-Q Curve		
Part No.	B / S / F	V	A	RPM	m ³ /hr	CFM	Pa	In-H ₂ O	dBA	No.
BGN22599B24M	B	24	4.5	2700	1160	683	530	2.13	67	①
BGN22599B48H	B	48	2.3	2700	1160	683	530	2.13	67	①

● Drawing



● Characteristic Curves

